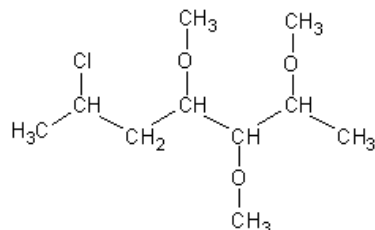
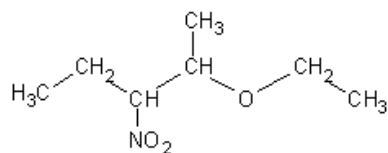
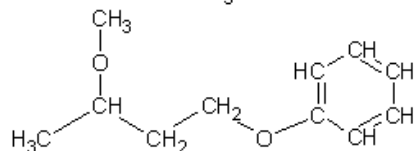
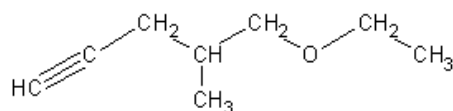
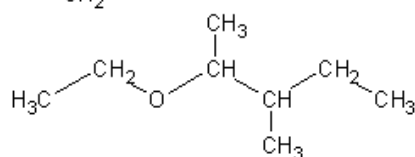
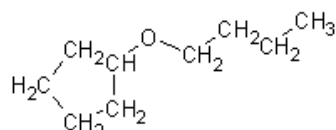
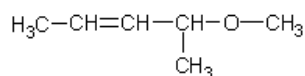
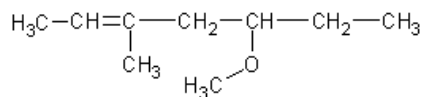
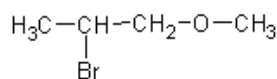
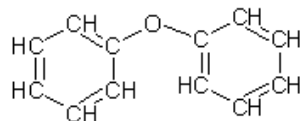
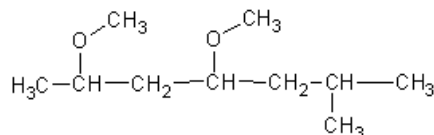
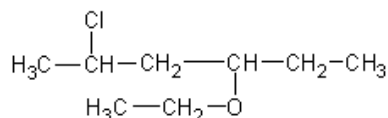
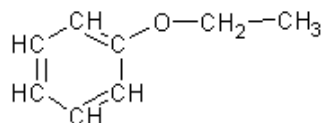
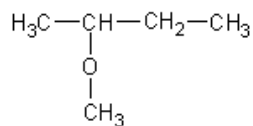
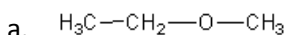


Ethers Practice

1. Give the correct name for the following compounds.



2. Draw the structural formula for the following organic compounds.

- | | |
|------------------------|---------------------------------|
| a. dimethyl ether | h. 7-chloro-5-methoxyoctane |
| b. 2-methoxypropane | i. 2-methoxy-4-hexene |
| c. 1-ethoxybutane | j. 3,5-diethoxyheptane |
| d. diphenyl ether | k. dipropyl ether |
| e. ethyl methyl ether | l. butyl pentyl ether |
| f. methyl propyl ether | m. 1-ethyl-3-propoxycyclohexane |
| g. methoxybenzene | n. ethyl phenyl ether |